



GROW.  
EXPLORE.  
DISCOVER.

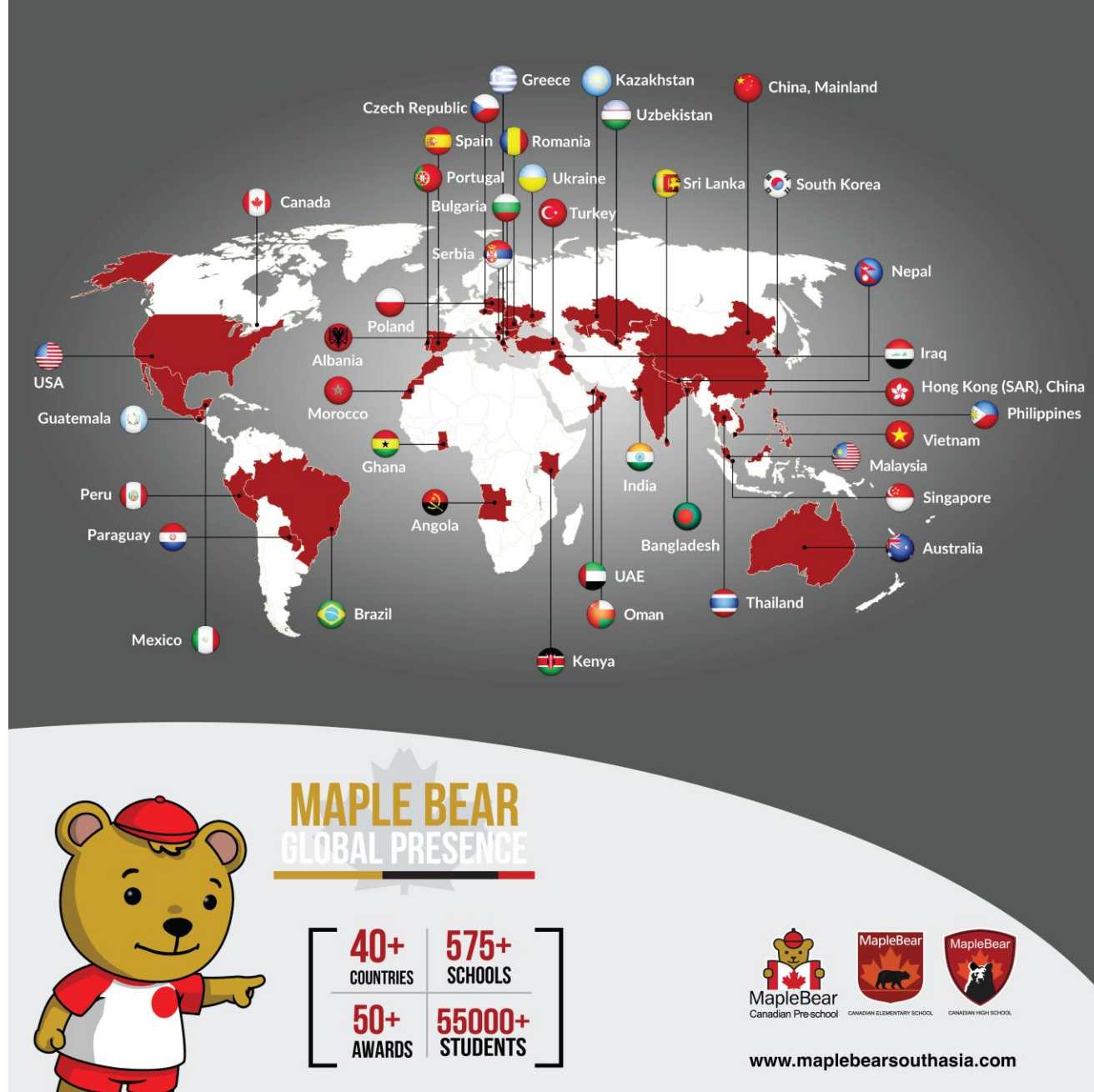
MAPLE BEAR  
FRANCHISE  
OPPORTUNITY



The best of  
Canadian education  
for a global future.

# ABOUT MAPLE BEAR

The Maple Bear Education System brings Canada's track record of **excellence in early childhood education** with bandwidth to aid the **best quality assurance in childcare** and early learning. With 130+ Maple Bear Schools in the region and rapidly expanding, Maple Bear South Asia is a joint venture between Maple Bear Global Schools Ltd, Canada and Modi Edutech (Modi Group) offering Pre-School, Elementary and Day care facilities for urban parents and corporates.



# Maple Bear Global Presence



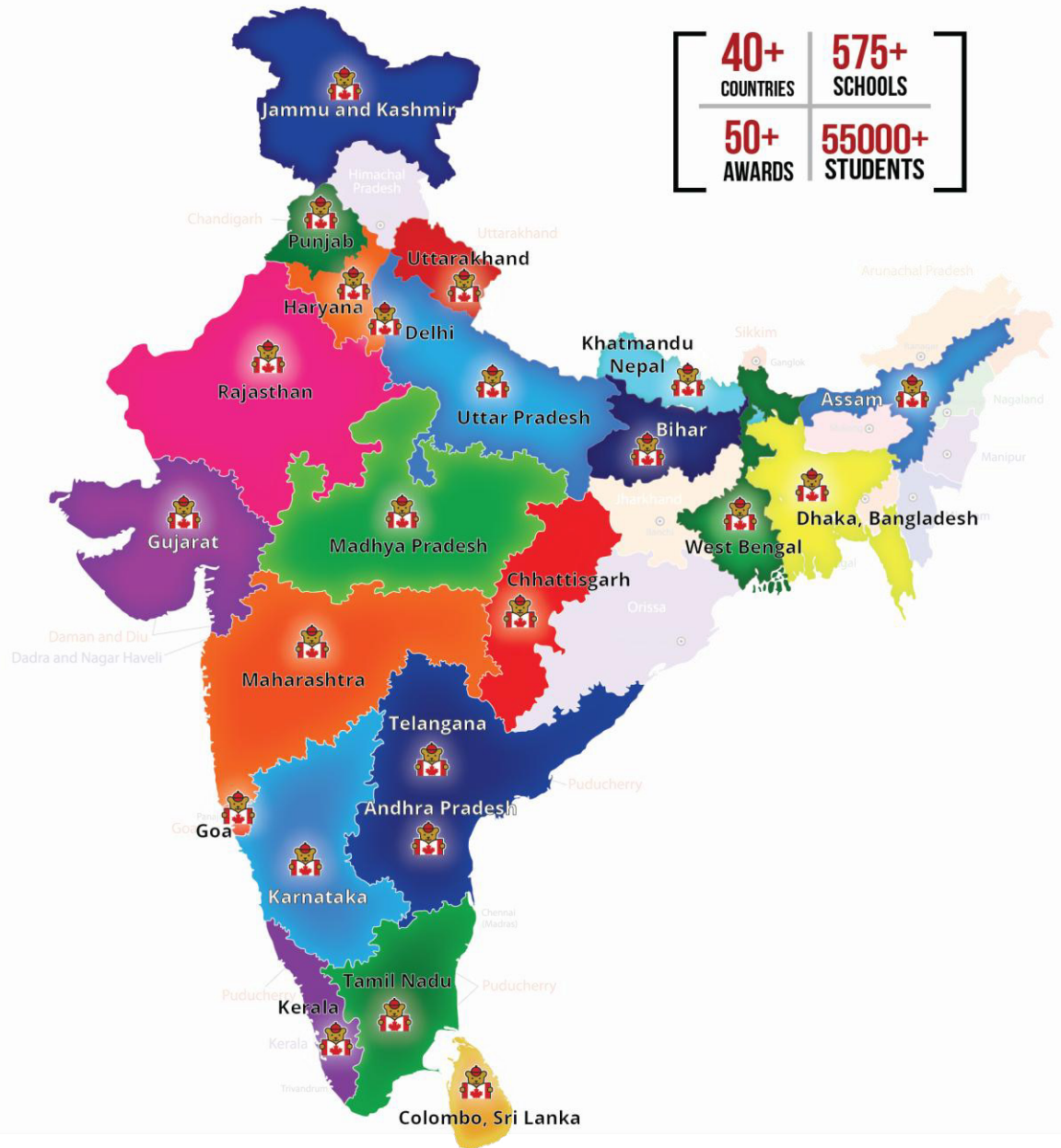
# Maple Bear South Asia Presence

**40+**  
COUNTRIES

**575+**  
SCHOOLS

**50+**  
AWARDS

**55000+**  
STUDENTS



Delhi	Noida	Gr. Noida	Ghaziabad
Gurgaon	Sonepat	Panipat	Modinagar
Bahadurgarh	Alwar	Lucknow	Kanpur
Meerut	Ludhiana	Mukandpur	Indore
Bhopal	Gwalior	Patna	Silchar
Guwahati	Ankleshwar	Rohtak	Pune
Goa	Hyderabad	Guntur	Bengaluru
Jammu	Durg	Vijayawada	Hassan
Krishnagiri	Trivandrum	Calicut	
Nepal	Bangladesh	Sri Lanka	



# OUR LEADERSHIP



The best of  
Canadian education  
for a global future.



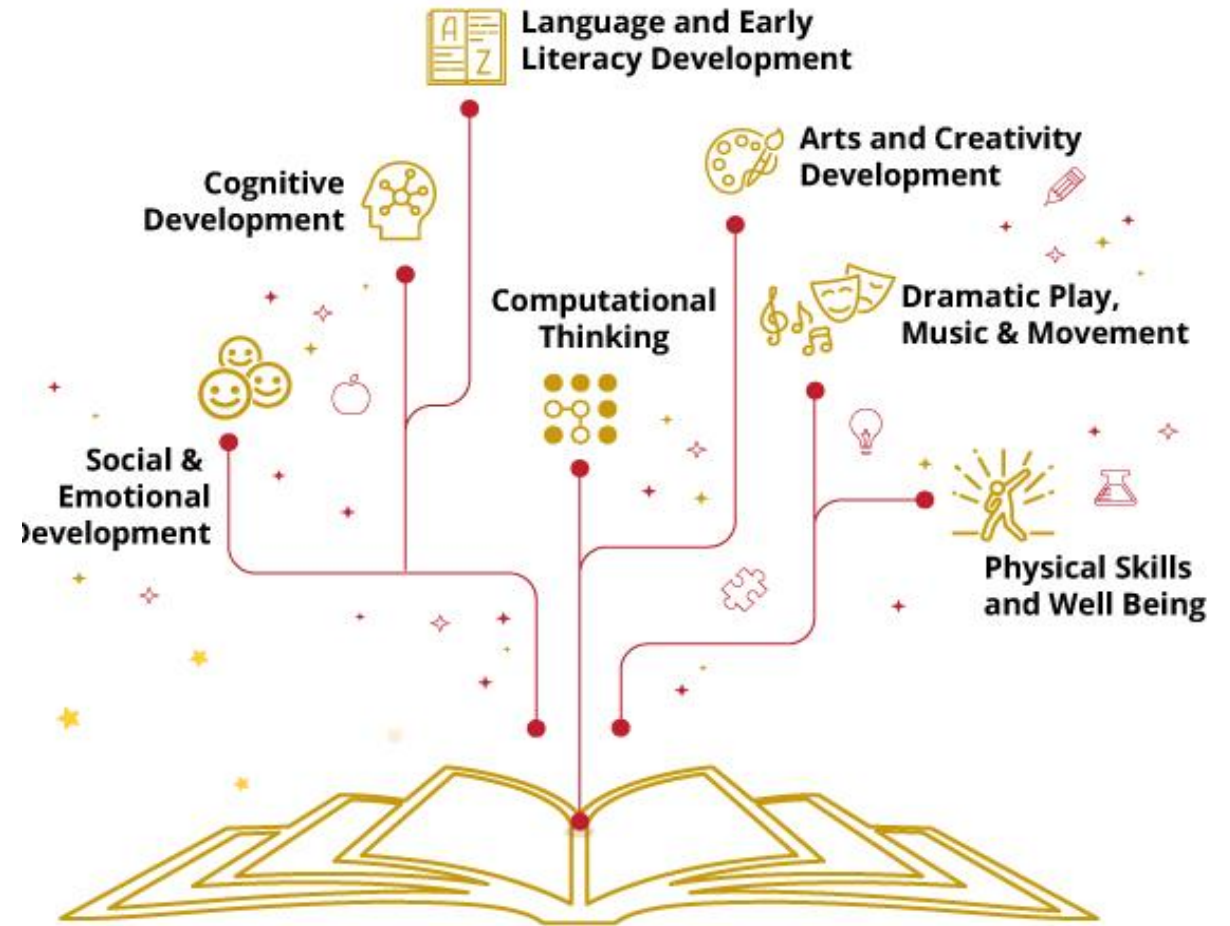
# OUR PRESCHOOL PROGRAMS



The best of  
Canadian education  
for a global future.

# Core Curriculum- Preschool

- Maple Bear sets high standards to ensure children's readiness for elementary school.
- Maple Bear gives children the broad range of knowledge and skills that provides the right foundation for good progress through school and life.



- Our curriculum is written by our team of Canadian educational experts and continually updated with the latest in Canadian educational practices.
- At the preschool level, Maple Bear delivers a student-focused English immersion learning system based on Canadian educational pedagogy and best practices.





# Programs Offered

6 Months – 10 Years

Our goal is to deliver a student-focused learning system in a safe, secure and stimulating environment that prepares students for success at a post secondary level and that instills a passion for lifelong learning. The Maple Bear Program is designed to educate the whole child - physically, intellectually, emotionally, and socially. Our regular programs include:

## Early Toddlers (12 Months onwards)

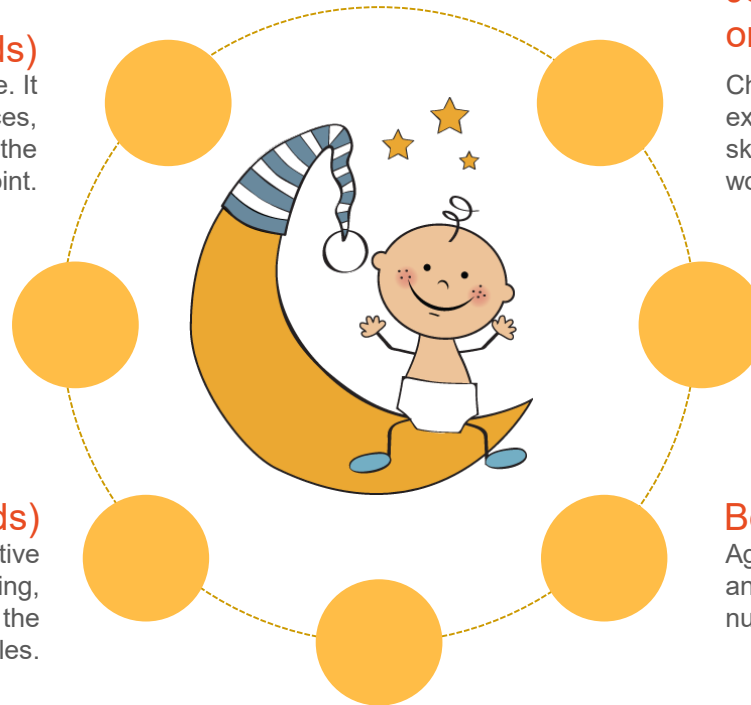
This program is specifically for 12-18 months of age. It is organized to ensure that environment, experiences, activities & routines have relationship building as the starting point.

## Toddlers (18 Months onwards)

The program offers an environment for the child to safely practice new skills they learn and set the stage for the next level of development.

## Nursery (2 1/2 Years onwards)

This program reinforces and builds on positive attitude by offering varied stimulating, enjoyable experiences and enhances the individual learning styles.



## Junior Kindergarten (3 1/2 Years onwards)

Children need to learn to make connections with past experiences and current learning. Integrating topics with skill development will help the children make sense of the world and their learning.

## Senior Kindergarten (4 1/2 Years onwards)

The knowledge and skills that children acquire by the end of Kindergarten, along with positive attitudes to learning that children develop in these early years, form the basis of effective learning in the later years.

## Bear Care (6 Months to 10 Years)

Age-appropriate activities to promote cognitive and social development in a warm and nurturing environment.



# Unique Programs

18 Months – 10 Years

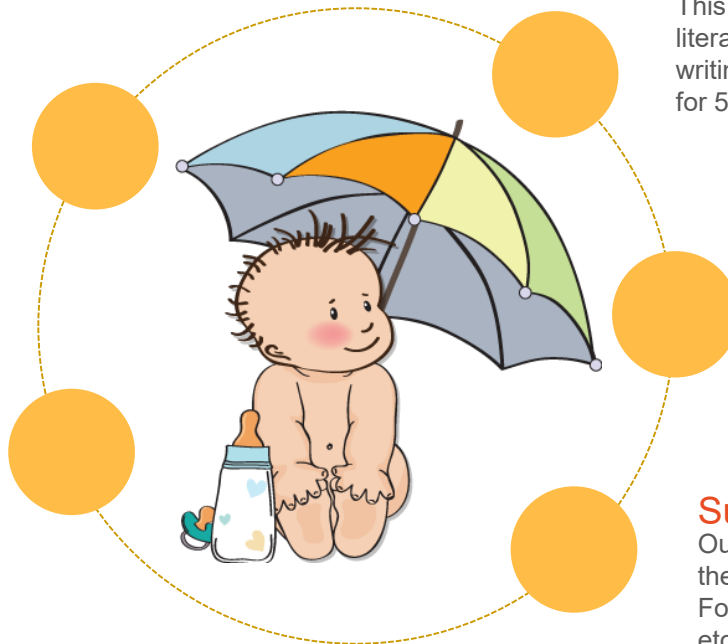
Our Unique programs are designed to cater to children up-to 10 years. This not only helps you in cater to a wider target audience but also increases the capacity of student strength by up-to **80%** over and above the Regular programs **within the same infrastructure** .

## Early Moms & Tots

This program is to provide parents & their toddlers an opportunity twice a week to come together for friendship, learning and fun. The group is for 12-18 month olds.

## Moms & Tots

It is for mothers who prefer full participation in early years. The group is for 18-24 month olds, thrice a week.



## English Plus Programs

This program is to enhance students English literacy skills in listening, speaking, reading, writing, viewing and representing. The group is for 5-8 year olds, thrice a week for 90 minutes.

## Saturday Programs

This program helps children consolidate their learning in school. They are encouraged to learn through questioning, observing, investigating and doing. The group is for 3-5 year olds, once a week for 3 hours.

## Summer Camps

Our summer camps are thematic ranging from themes like Dinosaurs, Drama Camp, Forensic Science, Jungle Book, Inventions, etc. This group is for 18 months - 10 years.



# A REWARDING PROPOSITION



1

## Get Access to Teacher Training

We provide multiple **FREE** Teacher Training through workshops updating teachers with latest methodology through interactive workshops and learning experiences

## Infrastructural Developments

Site visits are done by our Maple Bear team and we provide guidelines and suggestions to help you create a long lasting school.

2







### Business Planning

We not only assist you in your initial business planning but also provide you with business solution tools that can enable you to track & monitor your success 24x7x365

3

### Comprehensive Marketing Support

Planning, strategizing, creative designing & monitoring are provided to the franchisees. What you also get is a website, email marketing tool, setup of social media channels and access to local marketing expertise.

4





5

## Troubleshooting

Our teams are always available to help you solve day to day problems by setting up Skype calls and scheduled trainings organized for Owners, Centre Heads, Teachers as well as Nannies.

## Admissions

Our teams work hands on with your staff to counsel them on how to handle admission enquiries. Every month we receive 100s of enquiries from parents looking to specifically admit their child in one of our schools.

6





7

### Canadian expertize

Learn from your peers and experts from Canada at our National Annual Convention as well as Regional Workshops conducted by Trainers from Canada.

# The best of Canadian education for a global future.





# FRANCHISE OPPORTUNITY PRESCHOOL



The best of  
Canadian education  
for a global future.

# SETUP REQUIREMENTS- PRESCHOOL

- A **Maple Bear** school can be incorporated into an **existent school or built from ground up.**

**3000 – 4000**

SQ. FT Space  
Including 800 – 1200  
sq. ft outdoor play area



**4 – 6**

Rooms of 300-350  
sq. ft each with 3-4  
washrooms



And most of all, a **child friendly and secure space** ideal for our little ones



# RETURN ON INVESTMENT- PRESCHOOL

**INR 35L Onwards**

As the initial investment

**INR 5L+GST**

Franchise Fee for  
a 7 year contract

**INR 15L**

Initial School  
Setup

**Royalty**

**15%**

*On Gross Revenue*



**Local Expenses**

Depending on the property

**Office  
Equipment**

A.C., Office Setup, Fire  
fighting equipment,  
CCTV etc.

**Renovation**

**Branding  
Launch  
Expense**

- **Operational break even takes around 15 to 18 months\***
- **Return on investment begins after 2 years of operations\***







# OUR CORPORATE TIE UPS



The best of  
Canadian education  
for a global future.



The curriculum and Methodology is the Strength of Maple Bear. When we visited a center of maple bear a toddler child could count and could know the value of the same. That's when we decided to take up Maple Bear as a Franchise.

~ Maple Bear Canadian Pre-school, Uttarahalli, Bengaluru, Ms. Mamatha BM (Owner)





The lack of quality education in the early years of a child prompted me to open a Maple bear school in my city. The preschools do not have a teaching methodology or curriculum for the young ones. Preschools are thought to be a place where a child is just left to play for sometime. The importance of early childhood education is not taken seriously. In my opinion the change parents observe in their kids after Maple Bear will benefit my city.

~ Maple Bear Canadian Pre-school, New Friends Colony, New Delhi, Ms. Surabhi Gupta (Owner)





Our joining hands with Maple Bear India to redefine the early childhood care and education in Sadhu Singh Shergill Academy Mukandpur Punjab has really transformed the learning as well as teaching process. The entire team of Maple Bear India is amazingly involved and we have achieved the desired objectives regarding total implementation of MB program. Almost all the parents of 300+ students in preschool are not only happy but asking us to further strengthen this system to junior school level. So I can convincingly recommend Maple Bear preschools to all concerned

~Maple Bear Sadhu Singh Shergill Academy, Mukundpur, Punjab, Dr. Amarjit Singh  
(Vice Chairman)



Extremely relevant to the modern education, Maple Bear methodology has helped us shape the learning outcomes of our children through a non-strenuous and joyful way. Students have grown confident in their actions and speech; enjoy the experiential learning and supremely love the school. I can proudly say that we are slowly but surely seeing in them self-motivated learners preparing for their and concomitantly our bright future. We are indeed proud to be a part of the Maple Bear family and can foresee its growth in leaps and bounds not only in India but around the globe.

~ Maple Bear Chandrabala Modi Academy, Ankleshwar, Gujarat,







Elementary program of Maple Bear has been designed in a way which teaches the advanced curriculum with focus on conceptual understanding. Children learn different concepts with different strategies which makes their foundation strong and helps them in the long run.

~ Maple Bear Canadian school, Indirapuram, Ghaziabad,  
Ms. Jaya Prasad (Owner)

When we decided to open a pre-school in 2013, we tried to understand what different pre-school brands offer and finally decided to partner with Maple Bear because they bring the well-acclaimed Canadian curriculum to India. We are glad to have taken the right decision. What impresses us the most is that all Maple Bear schools across the globe, whether it is in USA, India or Dubai teach the same curriculum, which makes it is a truly international school. Maple Bear also has several training programs to help teachers excel in their classrooms. Moreover, everyone at Maple Bear India is a phone call away to support us on logistics or anything that we need.

~Maple Bear Canadian Pre-school, Gottigere, Bangalore, Sangeetha and Abhilash





# Be a Successful Business Partner with Maple Bear in 5 Simple Steps

**Step I**

**Discuss the Maple Bear Opportunity with Maple Bear representative.**

**Step II**

**Identify a good place according to Maple Bear requirements.**

**Step III**

**Agreement Finalization and Signing.**

**Step IV**

**Receiving the detailed timeline and support to launch Maple Bear in your city.**

**Step V**

**Commencement of Operations.**



# Maple Bear

## A GLANCE OF MAPLE BEAR SCHOOLS



The best of  
Canadian education  
for a global future.



# Exterior





# Reception & Office





# Classrooms





# Indoor & Role Play Area





# Washrooms





# Outdoor Play Area





# Bear Care Set Up

